



6TH Form prospectus

Abbeyfield School



**Inspiring
Excellence**

Welcome
Page 2

Senior students
Page 4

Abbeyfield pathways
Page 7

Sixth Form courses
Page 11

Sixth Form

Sports Leadership Page 41

Sixth Form Enrichment
Page 42

I can...

Peter Sloan:

I have enjoyed every moment of studying at Abbeyfield Sixth Form. Abbeyfield offers a plentiful amount of leadership opportunities, as well as encouraging use (to volunteer) within the school. The lessons are very interactive, enjoyable and beneficial. I have thoroughly enjoyed my time here.



**Application
Information**



Welcome from the Head of Sixth Form:

We are delighted that you are considering Abbeyfield 6th Form for your post-16 provision. At Abbeyfield we are extremely proud of our 6th Form offer. Challenge Partners have recognised our outstanding provision (2018); a finding supported by our Alps outcomes which place us within the top 25% nationally for student progress (2018), and by Ofsted who found "Students in the Sixth Form are making better progress with their A level and applied courses than their peers in other schools across the country" (2017). Our Summer 2022 outcomes were outstanding, and our students were delighted to be able to progress to their chosen post-18 destinations.

Our outcomes reflect a commitment to high quality teaching which means that students are able to make better than expected progress across their subjects. Our smaller than average class sizes allow for seminar style teaching, where students are able to spend more time with teachers to discuss work and understand what they need to do to make progress. Students are also supported through supervised study sessions to complete the independent working required to be successful in their Level 3 courses.

Our excellent pastoral and careers guidance support students to be prepared for life after Abbeyfield, and we are able to provide an extensive range of leadership and enrichment opportunities to add value to post-18 applications. As a result, our 6th Form students are able to access a wide range of post-18 pathways, including Oxbridge, other Russel Group universities, Degree Apprenticeships, Higher Apprenticeships, paid employment, or simply taking a gap year to travel before moving onto university or into a career. We are very proud of our provision, and hope that our prospectus will provide you with the information you require to help you to make an informed decision about our 6th Form.

If you have any questions, or would like to arrange a tour of our 6th Form accommodation, please contact me by email: sxj@abbeyfield.wilts.sch.uk



Miss Jones
Head of 6th Form



"The sense of community, everybody knows everybody and everyone helps each other and I am always happy when I am there"

Head Students

Head Students: As part of their 6th Form programme, Abbeyfield students are offered numerous leadership opportunities and enrichment roles which can not only add value to Post-18 applications but provide us with experiences allowing us to enhance crucial life skills such as leadership and communication. Abbeyfield is a school where you are allowed to feel comfortable enough to express yourself and where teachers adapt lessons to encourage wide participation making lessons enjoyable as well as challenging you to your full potential. This promotes a community feel within the school in which Abbeyfield's staff are familiar with each student. We are very proud to be part of this school community for these reasons and feel very privileged to have been appointed as Head Students.

Organising the whole school Student Council is a key responsibility in our role as Head Students. This involves students from across the school representing their peers by meeting to discuss opinions and new ideas for the school allowing feedback from all years to be passed onto Mr Norgrove (the Head Teacher) and Senior Leadership Team giving rise to improvements in our school. By combining the experiences of different year groups, the Student Council benefits from a variety of views allowing younger and older students to compromise perspectives, benefiting everyone. The Student Council is a friendly yet professional environment ensuring the student body are able to interconnect with external parties as well as members of staff. This responsibility allows us to thrive as students, leaders, and individuals as the skills and experiences acquired from these positions are transferable to our next steps in life, beyond Abbeyfield School.

Additionally, our role as Head Students has allowed us to gain experience in dealing with external bodies, such as charities. Through working with the 6th Form Student Leadership team, a considerable contribution has been able to be made towards the local community through running fun events to help raise funds for charities such as The Grand Appeal, Doorway Project and The Samaritans. These experiences have given us the chance to gain valuable skills helping us Post 18, whilst also ensuring that Abbeyfield continues to make a difference to both its students and the wider community.

Aimie Beck and Sam Akerman



Deputy Head Student (Pastoral)

The pastoral team is an indispensable part of our Abbeyfield School community. It is vital that as a school, we are not only teaching the academic things, but also teaching the essential skills and knowledge to take into the wider community. The peer mentoring programme, our PSHE sessions and various support groups i.e. LGBTQ, are all things that the Pastoral team help to deliver in a way that prioritises the wellbeing of the pupils whilst also raising awareness of the importance of mental health and student welfare. I feel that all these programmes and support systems are the keystones of what make Abbeyfield great. As a member of the Senior Student Leadership team, I have had the privilege to make informed decisions regarding the pastoral support within our school. Having this position had really helped me to develop my confidence, my organisation and communicative skills, and I feel I can now respond positively to leadership positions. **Emma Balloch**

Deputy Head Student (House System)

The House System is a huge part of the school and ensures the engagement of students in activities other than their subject lessons. This allows the students to feel more connected and part of a larger community, developing skills in many aspects and pushing them to do their very best every day. The effort that you put in doesn't just benefit yourself; your contribution will go towards the overall performance of the house and therefore benefits other students within the house when it comes to handing out prizes. Being part of the senior leadership team in Abbeyfield 6th form provides a huge variety of skills and experience, which can often be applied in post 6th form life such as job applications.

The roles of House Leader (Year 12) and Senior House Leader (Year 13) allow you to have an impact within the school and the local community as well. Charity is a very important aspect of our houses, and we pride ourselves in always producing 100% no matter the cause. We have a proud history of always supporting charities that will be meaningful to our staff and the student population. Our donations have made a substantial difference to a lot of these charities and enabled some of them to survive through difficult times and continue their fantastic work.

Perhaps the most important aspect of being a house leader is the interactions it gives you throughout the school with other students and many of the staff members. These interactions take shape in the form of house events and fundraisers such as sports competitions, bake sales, quizzes and even sponge the teacher days. As a senior leader you will have an active role in deciding what activities you'd like to run and how you'd like them to do them. Although this role contributes a substantial amount to the school itself, it's also hugely beneficial when it comes to planning for a future filled with responsibility where practise really does make perfect.

I think that the House Leader role is an excellent chance to become really involved in the school community and gain skills that will be truly valuable in life post 6th form. **Holly Begent**

academic studies

Research shows that the most important factor in academic success is time spent with qualified and enthusiastic teachers. At Abbeyfield we teach in smaller than average groups and encourage staff to adopt a seminar approach ensuring each student can benefit from individual time with subject specialists as well as structured teaching time, and supervised study sessions to support independent working. This has enabled students to make progress and achieve positive outcomes.

Abbeyfield Pathways

All applicants will be provided with guidance to support them to choose the most appropriate of our three academic pathways:

- 1 Pathway to Russel Group universities including Oxford and Cambridge. Accessible for students who can access A-B grades at A Level. Students will need to study at least two facilitating subjects. Students wishing to follow professions such as Law need to follow this Pathway. Anyone interested in medicine or veterinary careers must study A Level Chemistry.
- 2 Pathway to degree level HE either through university or apprenticeship. Accessible for all students who can secure 3 Level 3 qualifications (A Levels, or a combination of A Levels and BTECs).
- 3 Pathway to Higher Apprenticeships or work. Suitable for students who do not (currently) wish to continue in education post-18. Accessible by all.

"Abbeyfield School Sixth Form is an incredibly exciting place to be. We are very proud of our Sixth Form offer, and accommodation, and look forward to welcoming you to our community".



"Students achieve well in the Sixth Form and benefit from strong teaching and effective support, including supervised study sessions."

Ofsted

Recommended Pathways

(Please also see website for subject entry grades)

You will need to study a combination of 3 subjects. We have provided guidance on recommended pathways to ensure combinations of subjects support students with post-18 progression. More Able students can request to study 4 A-Levels. All students are also able to complete an EPQ and / or Core Maths as an additional 1-year course. Further Maths is available as an additional subject for students studying A-Level Maths only (recommended for engineering and Maths post-18 pathways).

*Academically more rigorous i.e. preferred by Russel Group universities.

BLOCK A

Maths*
English Lang
Psychology*
IT BTEC
History*

BLOCK B

Physics*
English Lit*
Sociology
Economics*
Sport

BLOCK C

Chemistry*
Philosophy*
Geography*
Criminology
Music / Drama

BLOCK D

Biology*
Spanish / French*
Comp Sci*
Business
Photography / Art
Business BTEC

Option blocks are finalised based on subject combinations identified on Application Forms with preference given to students who apply by our December Deadline.



Celebrating Success: Summer 22

Despite having been unable to sit their GCSE exams due to school closures, we are delighted that our students were able to evidence outstanding progress and attainment in their exams and have achieved exceptional results.

Notable successes include:

- Bradley Beck:** A*, A*, A* (A* EPQ) - (Oxford - Chemistry)
- Max Wild-Urquidi:** A*, A*, A, A (Oxford - English Literature)
- Sebastian Millward:** A*, A*, A* (Warwick)
- Chloe Palmer:** A, A, A (Keele - medicine)
- Ben Cooper:** A*, A, A (Warwick)
- Caleb Loveridge:** A*, A*, A (Lancaster)
- Tom Abley:** A, A, A (Bath)
- Jamie Ballinger:** A*, A, A, C (Reading)
- James Thompson:** A, A, B (Keele)
- Kyle Noakes:** A, B, B (Gap Year - Exeter 2023)
- Max Gray:** A, B, B (Gap Year, university 2023)
- Tommy Nicholls:** A, A, B (Gap Year, university 2023)
- Dan Mead:** A, A, B (further education)

All of our students, without exception, should be incredibly proud of their outcomes which represent that Abbeyfield 6th Form provides both the academic rigour required to achieve A* and A Grade outcomes, but also exceptional value added to support students to access grades that are above those indicated by prior attainment. Strong outcomes have allowed our students to access their chosen post-18 pathways, and we wish them every success in the future.

Miss Jones, Head of 6th Form

Course Listings



"The teachers, personal attention you need. I know if I need something done you'll get it done quickly!"

It's small so we have good relationships with the teachers"

5 X GCSE Grade 4 or above / BTEC Pass – to include English Language Grade 4.

AS-Level only

Core Maths	12	AS Further Maths	14
EPQ	13		

Business

BTEC Business	15	Computer Science	18
BTEC IT	16	Criminology	19
A-Level Business Studies	17	Economics	20

Creative Arts

Music A Level BTEC	21	Fine Art &	23
Drama A-Level / BTEC	22	Photography with Graphic Communication	

English

English Language	24	English Literature	25
------------------------	----	--------------------------	----

Humanities

Geography	26	Religion, Philosophy... 28 & Ethics	
History	27	Sociology	29
Psychology	27		

Maths

Maths	30
-------------	----

Modern Foreign Language

French	31	Spanish	32
--------------	----	---------------	----

Science

Biology	33	Chemistry	34
Physics	35		

Sport

Level 3 Cambridge ...	36
Technical in Sport	



SCAN ME

Subject entry requirements are detailed on our website – see QR code for link'

AS-Level



Core Maths

Specification Details: AQA

Why Core Maths? Core Maths is about students doing applied mathematical problems to increase their confidence in using maths and to be better equipped for the mathematical demands of other courses, higher education, employment and life. Core Maths has been designed in collaboration with universities and employers to teach you the mathematical skills you need to be successful in a wide range of courses including the sciences and humanities alongside more traditionally mathematical courses such as Economics.

Furthermore it will develop your real-life maths skills. What you study is not purely theoretical or abstract; it can be applied on a day-to-day basis in work, study or life and the course will include a financial maths element where you look at calculations for tax, APR and loan repayments.

ENTRY REQUIREMENT:

Minimum Sixth Form entry requirement, plus:
Maths Grade 5

Extended Project Qualification (EPQ)

Specification Details: Edexcel

Why an Extended Project Qualification? Undertaking an “EPQ” gives you the opportunity to study something of your own choice and design. The project can be essay based/ field study/ performance or artefact.

The EPQ is based on university-style independent but supervised learning and is equivalent to an AS Level. Students can gain up to 28 UCAS points to contribute towards university entry requirements, or simply add value to apprenticeship or work applications.

Projects designed by previous and current students are diverse and challenging: “Is our current approach to protecting against human African trypanosomiasis appropriate?”, “Does the overuse of technology really affect people’s eyesight?”, “Is murder ever morally justifiable?”

ENTRY REQUIREMENT:

Minimum Sixth Form entry requirement, plus:
Aptitude for independent work and enthusiasm
for your chosen project area of work



AS Further Maths

Specification Details: AQA - 2 Year Course

Why Further Maths? AS Further Mathematics is designed to broaden and deepen the mathematical knowledge and skills developed when studying A-Level Mathematics. The course is studied alongside A-Level Mathematics and provides a stimulating experience for those who enjoy the subject. Students taking Further Mathematics overwhelmingly find it to be an enjoyable, rewarding, and empowering experience. For someone who enjoys mathematics, it provides a challenge and a chance to explore new and/or more sophisticated mathematical concepts such as imaginary numbers and polar coordinates. AS Further Maths is a desirable extra qualification for many Russel Group Economics, Maths and Engineering degree courses.

ENTRY REQUIREMENT:

Minimum Sixth Form entry requirement, plus:

Maths Grade 7

Must be studied in conjunction with A-Level Maths

I can...



Business



BTEC Business

Specification Details: BTEC

Why BTEC Business? BTEC Business is a course that will teach you a wide range of skills. Not only will you become adept at analysing a business, but you will have multiple opportunities to extend your learning through experiencing real world business visits and mentors.

The wide range of skills range from marketing and customer service through to interviewing technique and gaining promotions. In a world where competition has never been tougher, we endeavour to allow our students to gain real world skills that will help them develop into managerial prospects. This could really be the start of something very special.

ENTRY REQUIREMENT:

Minimum Sixth Form entry requirement, plus:

English Grade 4

Maths Grade 4

No requirement to have studied Business previously

BTEC IT

Specification Details: BTEC

Why IT? The BTEC Level 3 National extended certificate in IT is the perfect course for anyone looking to develop a common core of IT knowledge and study areas such as the relationships between hardware and software that form an IT system.

Other areas you will learn about are managing and processing data to support businesses and using IT to communicate and share information. You will have the opportunity to create your own social media campaign for a local business as well as develop an information management system.

Everything in the BTEC IT course is related to real world scenarios with opportunities to work in the community to build up “expert” knowledge desired by employers.

ENTRY REQUIREMENT:

Minimum Sixth Form entry requirement, plus:
English Grade 4
Maths Grade 4

Business Studies A-Level

Specification Details: AQA

Why Business Studies A-Level? A-Level Business Studies is a powerful tool to help launch you onto becoming a business person. The next CEO? The next Branson? Or want to work in a large company in marketing and design? Whichever it may be Business Studies will help you to develop the skills and knowledge to help you ultimately progress into the world of business.

The course provides students with challenging financial concepts and more creative concepts such as marketing. It pushes students to form evaluative judgements based on real world situations.

ENTRY REQUIREMENT:

Minimum Sixth Form entry requirement, plus:
English Grade 5
Maths Grade 5
Business Grade 5 if studied at GCSE but no requirement to have studied at GCSE





Criminology

Specification: WJEC

Qualification type: Level 3 Diploma (equivalent to 1 A-Level)

Why Criminology? This level 3 Diploma is offered to students who have a keen interest in crime. Criminology is all about an understanding of people and the society that we live in. You need to be non-judgemental, be very interested in people, society and crime. Students may find some of the content disturbing given the nature of crime, although all topics are handled sensitively.

The skills learned by studying criminology are transferable; these are highly valued in many occupations, and for entry to many further courses, even if you do not pursue a career in criminology. Careers directly linked to the study of criminology include working in the National Probation Services, the Courts and Tribunals Services or the National Offender Management Services.

ENTRY REQUIREMENTS:

Minimum 6th Form entry requirement

Computer Science

Specification Details: AQA

Why Computer Science? A-Level Computer Science is a rigorous, challenging and ultimately rewarding course that gives you a fascinating insight into the world of the computer scientist.

Dijkstra, a Dutch computer scientist, said that computer science is not just about the computers, and in A-Level Computer Science you will widen as well as deepen your knowledge. From logic gates to processors, networks to the Internet, databases to big data, algorithms to ethics; you will cover it all. As well as new ways of programming and a real-world programming project of your choice.

In an increasingly automated world, where computer scientists are in demand, AQA computer science gives you an excellent grounding for further study and progression.

ENTRY REQUIREMENT:

Minimum Sixth Form entry requirement, plus:

Maths Grade 5

Comp Science Grade 5 if studied at GCSE but no requirement to have studied at GCSE





Economics

Specification Details: AQA

Why Economics? Economics is a study of behaviour. Students studying Economics ask the important questions about why markets exist and what incentivises firms to produce as well as why individuals choose to consume the goods and services they do.

Students tackle the basic economic problem linked to scarcity and investigate why markets nearly always fail to allocate the right amount of goods and services to satisfy demand. Students also question the role of the government in influencing and regulating markets and consider the complexity of decision making and where governments have got it wrong.

ENTRY REQUIREMENT:

Minimum Sixth Form entry requirement, plus:
Maths Grade 5
English Grade 5

Creative Arts



Music A-Level / BTEC

Specification Details: Edexcel

A-Level Music is exciting and rewarding, unique in its combination of academic study and creative opportunity. The course is based around developing three key skills; performing, composing and listening & appraising. You build on your knowledge of musical theory, gain a solid understanding of the basic principles of performance, refine your practical skills, study and practice composition, and expand your knowledge of music history through listening and appraisal.

Within these areas of study, A-Level Music offers you the opportunity to develop your ability to use musical devices and conventions through composition, engage with and increase awareness and appreciation of the diverse heritage of music, and develop critical evaluation skills through appraising your own and other's music.

A-Level Music is essential if you are considering a job in the music industry, whether you plan to go down an academic or creative career path, and a strong choice if you are passionate about music.

ENTRY REQUIREMENT:

Minimum Sixth Form entry requirement, plus:
English Grade 4
ABRSM or equivalent practical exam
Optional: Music Grade 6 studied at GCSE

Drama A-Level / BTEC

Specification Details: BTEC

Why A-Level BTEC Performing Arts: Drama? Creative, dynamic, versatile, passionate, determined? This course offers you a much wider range of topics than A-Level for either subject. You will be able to develop your technical skills through practical classes, workshops and performances.

Much of the assessment is of a practical nature: performance and class-based development work. Written assignments capture the development of the work. Collaborative learning and expert, passionate teaching are key features of the course.

ENTRY REQUIREMENT:

Minimum Sixth Form entry requirement, plus:
English Grade 4

Optional: Drama Grade 4 if studied at GCSE but no requirement to have studied at GCSE

Fine Art & Photography with Graphic Communication

Specification Details: AQA

Course details: We offer two courses at A-Level: 'Fine Art' and 'Photography with Graphic Communication'. We deliver the AQA specification and both courses follow an identical structure: 60% coursework and 40% practical exam. Throughout the course students will explore, develop and create practical responses for their own 'personal investigation' and they will support their studies through contextual research and a written essay. Students will also complete a practical project in response to an exam board theme for their practical exam.

Why Art & Design? The creative industries are worth almost £10 million an hour to the UK economy and it is a fast growing sector. Visual arts contribute significantly to this growth and career prospects for young artists are exciting.

Abbeyfield Art Department houses excellent facilities including general art rooms, pottery wheels and kilns, a computer suite and photography studio and darkroom. Teachers within the department can offer a range of expert skills including: drawing and painting, ceramics, photography and graphics. Our expertise enables us to offer a broad curriculum and our school is widely recognised for the outstanding technical skills that our students develop.

The Art Department offers a range of enrichment activities including gallery visits, workshops and we are currently establishing links with local universities. This is an exciting time to be part of a vibrant and creative community!

What are the progression routes - university/careers? A-Level Fine Art or Photography with Graphic Communication is the perfect stepping stone to a Foundation Art course or degree at university. Students from Abbeyfield regularly progress to exciting degrees including fine art, animation, photography, graphic design and architecture. Possible careers include: advertising, publishing, teaching, interior design, graphic design, illustration, fashion design and photo-journalism.

ENTRY REQUIREMENT:

Minimum Sixth Form entry requirement, plus:
English Grade 4

Optional: Art Grade 4 if studied at GCSE but no requirement to have studied at GCSE





English

English Literature

Specification Details: AQA

Why English Literature? English Literature is a wide ranging, diverse course studying texts from all the three major genres, across a wide time frame. Though Classic literature such as Shakespeare has its place in the course, so does modern literature, including popular poets like Carol Ann Dwyer and novelists such as Ian McEwan and Margaret Atwood.

The historicist style of study allows students to scrutinise a shared theme across a whole range of texts, understanding how presentations of this theme can alter according to the attitudes, politics or events of the time it was written, and then compare these attitudes to more modern ones.

The non-exam component is a brilliant opportunity for students to focus on literature that interests them personally, and make comparisons between their favourite texts, researching contexts in more detail.

ENTRY REQUIREMENT:

Minimum Sixth Form entry requirement, plus:
English Lit Grade 6
English Lang Grade 5

English Language

Specification Details: AQA

Why English Language? English Language is the study of linguistics – how English works as a language. It takes a fascinating look at how communication works, how the brain handles language, the process of learning the language and the evolution of the English language over time.

The course is focused on the analysis of a wide variety of texts that go way beyond those studied at GCSE and will provide you with an enlightening insight into how we communicate with each other in everyday life both in writing and verbally.

ENTRY REQUIREMENT:

Minimum Sixth Form entry requirement, plus:
English Grade 5





Humanities

Geography

Specification Details: OCR

Why Geography? Geography is about the world you live in; it is about where you live, how you live, our futures and our pasts. It is a dynamic, fast paced and exciting subject which encourages flexible thinking, problem solving, critical thinking and independence of thought. A-Level Geography is a highly successful subject at Abbeyfield School, and students will be extremely well supported in their studies.

Course content includes many links to GCSE units, whilst also introducing students to issues with human rights and the complexity of international trade. The course includes completion of an Independent Investigation (20% of total mark).

A-Level Geography is highly valued by universities and employers. As a facilitating subject it will keep open a wide range of options at university, or Higher / Degree apprenticeships.

ENTRY REQUIREMENT:

Minimum Sixth Form entry requirement, plus:
English Grade 5
Maths Grade 5
Geography Grade 5

History

Specification Details: Edexcel

Why History? Never has there been a more important time to study A-Level History. The past is alive, controversial and hugely significant. From the discovery of Richard III's body under a carpark in Leicester, to the events that have shaped modern Russia and China, our courses show that History is more than a study of the past. They are thought provoking, relevant and allow us to critically engage with the present and the future. History is constantly being written and rewritten, contested and reinterpreted and we interrogate and debate these issues.

Most importantly however History is about people: individuals, families and society. For we are the custodians of human experience and far from being rooted in the past, History is the passport to the future.

ENTRY REQUIREMENT:

Minimum Sixth Form entry requirement, plus:
English Grade 5
Maths Grade 5

History Grade 5 if studied at GCSE but no requirement to have studied history at GCSE

Psychology

Specification Details: EDUCAS (WJEC)

Why Psychology? Have you ever wondered why people behave and act the way they do? Are we more a product of our environment or our genes? How can we tackle issues such as mental health? We consider these questions and many more in Psychology.

You will have the opportunity to explore a range of psychological approaches from the Freudian era to modern day psychologists. In the second year of the course, you will explore a number of real-life implications including addiction, schizophrenia and criminal behaviour.

There will be lots of opportunities for debate throughout the course, including ethical issues, cultural bias and the reliability of memory. Alongside these topics, you will also learn how a psychologist carries out research and will conduct your own investigations.

ENTRY REQUIREMENT:

Minimum Sixth Form entry requirement, plus:
English Grade 5
Maths Grade 5
Science Grade 5

Religion, Philosophy & Ethics

Specification Details: OCR

Why Religion, Philosophy & Ethics? Do you enjoy asking why? Debating BIG QUESTIONS such as why we are here and what is the right thing to do? Engaging in high level discussion and discourse? Then Religion, Philosophy & Ethics is the course for you!

The course covers a wide range of philosophical, religious and ethical ideas including the ancient Greek philosophy of Plato and Aristotle, consideration of key ideas in Christianity and whether they are relevant today and how we make moral decisions about complicated issues such as euthanasia or sex.

ENTRY REQUIREMENT:

Minimum Sixth Form entry requirement, plus:
English Grade 5
Maths Grade 5
RPE Grade 5 if studied at GCSE but no requirement
to have studied RPE at GCSE

Sociology

Specification Details: OCR

Why Sociology? Do you enjoy exploring the world around you? Would you like to gain a deeper understanding of the structure of society? Would you like to explore the social issues that are relevant to your own experiences and those of the people around you?

Sociology seeks to explore the factors that affect and influence our everyday decisions and experiences. It looks to explore and analyse a variety of theories which attempt to explain how our society and community functions today.

It is the study of human behaviours and the interaction between human groups and institutions.

ENTRY REQUIREMENT:

Minimum Sixth Form entry requirement, plus:
English Grade 4



Maths



Maths

Specification Details: AQA

Why Maths? A-Level Maths is a rigorous subject, suited to highly motivated mathematicians. Studying Maths helps us find patterns and structure in our lives. Practically, Maths helps us put a price on things, create graphics, build websites, build skyscrapers and generally understand how things work or predict how they might change over time and under different conditions.

Maths is one of the best subjects to develop your analytical, research and problem solving skills. Not only will studying maths help give you the knowledge to tackle scientific, mechanical, coding and abstract problems, it will also help you develop logic to tackle everyday issues like planning projects, managing budgets and even debating effectively.

ENTRY REQUIREMENT:

Minimum Sixth Form entry requirement, plus:
Maths Grade 6

Modern Foreign Languages



French

Specification Details: AQA

Why French? Studying AS/A2 French at Abbeyfield provides a comprehensive experience that no other subject outside languages can match. The content is fantastic, with students studying a wide range of rich topics such as technological and social change, diversity and the benefits it brings, political engagement, and French-speaking artistic culture, including francophone music and cinema.

French at Abbeyfield will develop your current affairs university-level research. Our teachers have extensive experience of French culture and push students to stay abreast of current affairs by embracing the very latest technology.

ENTRY REQUIREMENT:

Minimum Sixth Form entry requirement, plus:
French Grade 5

Spanish

Specification Details: AQA

Why Spanish? Studying Spanish at AS/A2 is something that will really stand you in good stead for the changing world that we live in. You'll gain a deep insight not only into the language and grammar of this wonderful European country, but the culture as well. You will look at many contemporary themes, such as politics, family and youth culture. You will develop into an all-round communicator.

Universities seek out students who are primed and ready to make that next step to Higher Education. By studying Spanish with us at Abbeyfield, we'll show you how to make that step, helping you take your language learning experiences even further.

ENTRY REQUIREMENTS:

Minimum Sixth Form entry requirement, plus:
Spanish: Grade 5



Biology

Specification Details: AQA

Why Biology? Biology is the study of life, and what a wide range of topics this encompasses! This subject is so vast in its breadth that there are lots of areas of interest for students and lovers of lifelong learning.

At one end of a spectrum, Biology can enthral you at the microscopic level as we look at the complexities of the cellular level and the structure of the molecules that make all organisms.

At the other end of the spectrum we study the interactions between organisms, whether big or small, will fascinate you. Currently, biology faces a bright future, as biologists strive to develop ways to help improve the health of the world; whether it is finding a cure for cancer or ways to manipulate genes and stem cells.

ENTRY REQUIREMENT:

Minimum Sixth Form entry requirement, plus:
GCSE Biology Grade 6
Or Combined Science Grade 6-6

Chemistry

Specification Details: AQA

Why Chemistry? A-Level Chemistry is a rigorous, challenging and ultimately rewarding course that develops students' scientific skills and knowledge.

Chemistry is the branch of science concerned with the substances of which matter is composed, the investigation of their properties and reactions, and the use of such reactions to form new substances. Understanding chemistry helps you to understand the world around you. Cooking is chemistry. Everything you can touch, or taste or smell is a chemical.

Students considering a career in medicine or veterinary practise MUST study A-Level Chemistry.

ENTRY REQUIREMENT:

Minimum Sixth Form entry requirement, plus:
GCSE Chemistry Grade 6
Or Combined Science Grade 6-6



Physics

Specification Details: AQA

Why Physics? Physics has enormous breadth and depth which extends into every area of our lives. It is the universal science, an essential tool for many areas of science and engineering. Physics provides a model/explanation of the world around us ranging from the expansion of the Universe and the evolution of stars to sub-atomic particles such as Quarks.

The AQA course has been structured to include exciting topics of modern physics from the outset but underpinned by the key practical skills needed to become an experimental scientist or an engineer. These topics include Quantum Phenomena and Particle Physics. The course also studies in more detail topics which are more familiar, such as Energy, Force and Motion, Waves and Electricity.

ENTRY REQUIREMENT:

Minimum Sixth Form entry requirement, plus:
GCSE Physics Grade 6
Or Combined Science Grade 6-6



Sport



Level 3 Cambridge Technical in Sport

Specification Details: OCR

Why BTEC Sport? Level 3 Sport has successfully been delivered for over 12 years in Abbeyfield Sixth Form and has consistently achieved excellent results.

As well as achieving successful results students will be able to experience a variety of Sporting topics and submit work in different formats such as written exam, assignments and pre-release tasks.

Students opting for this subject will develop a wide range of transferable skills that are sought after by both universities, colleges and employers particularly in the sport and leisure field.

ENTRY REQUIREMENT:

Minimum Sixth Form entry requirement, plus:
Science Grade 4 minimum

Grade 4 PE if studied at GCSE but no requirement to have studied previously

ADVICE from our Year 13's...

Enjoy it while you can because it'll be over before you know it

Make sure to start revising as you learn things, the revision material will really help when preparing for exams

Make the best use of your time, don't just mess around in your frees

Totally sweat out year 12, get as far ahead as you can and it'll make your year 13 a lot easier

It's important to keep revising all the way through 6th Form, actually do it

Don't leave work/revision till last minute as it catches up with you

Revise as you go and take every exam or test seriously. You never know who might need to use them!!

The two years seems like a long time but it will go really quickly!! Enjoy your time, and don't get behind on your work, it's definitely easy to do so

Don't turn down opportunities

Review content for each lesson at the end of each day for half an hour or so

Exploring all options for university; I was sure I knew what I wanted to do until I decided I didn't want to do that course anymore



Why Abbeyfield 6th Form?



Ben Clayton

"What Abbeyfield Sixth Form does best is the individual support it gives to each student. I felt that the transfer from Year 11 was very well supported, from subject choices when making decision, to the being given good advise to support me to manage the increased workload What Abbeyfield Sixth Form does best is the individual support it gives to each student".



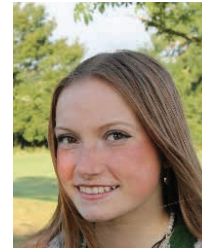
Karen Sadler

"I have enjoyed studying at Abbeyfield Sixth Form as it is great to study subjects I am interested in, in more detail. There have been a wider range of trips and events available and all the teachers have been very supportive, particularly as a student who was new to Abbeyfield".



Jess Tanner

"Since starting Sixth Form I have felt very comfortable beginning this new journey as teachers as I know the teachers, and all my friends. Everyone has been so supportive of me, and I wouldn't want to be anywhere else"



Lottie Belcher

"Sixth Form is a challenging and very rewarding experience which has allowed me to grow in confidence. My subject teachers have been incredibly supportive and have made me feel very prepared for upcoming exams".



Peter Sloan

"I have enjoyed every moment of studying at Abbeyfield Sixth Form. Abbeyfield offers a plentiful amount of leadership opportunities, as well as encouraging use to volunteer within the school. The lessons are very interactive, enjoyable and beneficial. I have thoroughly enjoyed my time here".



Ella Jefferies

"It is great to take subjects further and build upon existing knowledges whilst also learning brand new things. Study periods are also very beneficial to quietly work on revision and homework, and also to work together to understand problems. Teachers are also supportive and encourage you to get help whenever needed".



Chloe Kew

"Sixth Form was a big step-up for me, and it has been difficult but also enjoyable. Being a member of the 6th Form is a good experience as you feel more independent with the school compared to Year 11. The teachers are very helpful and make the step-up to A-Levels really manageable for all."

Life student

Sports Leadership

Our Sixth Form community allows students to take on roles and responsibilities across the school, help to run the Sixth Form and gain confidence in who they are as a person.

SPORTS  **LEAD SCHOOLS**  **YOUNG COACHES AND ACTIVATORS**

Sports leadership opportunities are supported by The Youth Sports Trust, and include:

- Sports Enrichment
- Sports Ambassador
- Sports Council

These roles offer exciting opportunities and the chance to be part of the Youth Sport Trust Leadership Programme, the only school in Wiltshire to offer this. You will be given the opportunity to organise and run different sporting festivals for our feeder primary schools. You will also work alongside the Chippenham Sports Partnership and be part of the Chippenham Sporting Community. As part of the Youth Sport Trust Leadership programme, you will complete a series of learning modules that focus on developing the skills which help you learn vital skills for life after school. We look at teamwork, communication, problem solving, self-belief and self-management and skills framework. All modules are fun and engaging, with activities that test the Sports Ambassadors knowledge and help them build their confidence to organise and run sports event. You will receive the Youth Sport Trust award at the end of your time at Abbeyfield. You will work with out of school Active Partners and the Abbeyfield PE Community, and Sixth Form leadership team.

The Sports Ambassadors are seen as the face of our Sports Community and will attend Sixth Form meetings. This role will give you the chance to plan and run events yourself, this is great for the local community and building your skill set. To help support this every person on the programme will undergo safeguarding and first aid training, you receive qualifications that will help you with life after school.

The great thing about the leadership role is you don't have to be SPORTY to be a Sports Ambassador. Instead, you need to demonstrate an ability to lead others, alongside the desire and commitment to make a difference.



Enrichment continued

DUKE OF EDINBURGH GOLD AWARD:

The Duke of Edinburgh's award is about helping you along the path to a productive and prosperous future.

Achieving your Gold Award will give you skills, confidence and an edge over others when you apply for college, university or a job. Beyond your academic achievements, universities want to see evidence of 'soft skills' that you have developed through extra-curricular activities, such as communication, commitment, leadership and teamwork. The Gold DofE Award is a fantastic way to demonstrate and evidence these skills in practice.

At Abbeyfield School we run the direct entry Gold award. This takes a minimum of 18 months to complete and requires participants to complete volunteering, physical and skill related activities.

The Gold award also requires participants to complete a residential activity. In completing the award you'll also make a difference to other people's lives and your community, be fitter and healthier, make new friends and have memories to last you a lifetime.



PASTORAL:

You will be part of a vertical tutor group, comprising Year 12 and Year 13, which is led by an experienced Sixth Form tutor. By having vertical tutor groups, we are able to develop an integrated Sixth Form community in which students can share mutual experiences and tutors can provide support across the Year groups. We also provide a clear tutor programme to ensure that effective use is made of this time.

6th FORM TUTOR PROGRAMME: 2023-24

MONDAY	TUESDAY*	WEDNESDAY	THURSDAY	FRIDAY
<ul style="list-style-type: none"> Reminder of key dates /deadlines/Messages Study Skills 	<ul style="list-style-type: none"> Reminder of key dates /deadlines/Messages Ted Talk Tuesday 	<ul style="list-style-type: none"> Reminder of key dates /deadlines/Messages Post-18 	<ul style="list-style-type: none"> Reminder of key dates /deadlines/Messages Current affairs debate /discussion 	<ul style="list-style-type: none"> Reminder of key dates /deadlines/Messages Weekly Quiz/ Countdown Challenge Etc
<p>TERMLY YEAR GROUP BRIEFINGS WILL BE NOTIFIED IN ADVANCE</p> <p>Supervised study</p> <p>1:1 meeting with each tutee (to include folder checks) at least once a term</p>				



TRIPS:

As part of our 6th Form offer, you will also have the chance to take part in various trips, both within the school day, as well as residential. Students who qualify for bursary funding can access this for curriculum trips.

- Various careers fayres, apprenticeship workshops & university open days (Year 12+13)
- Subject curriculum trips i.e. Physics, English and Geography
- Duke of Edinburgh Gold

VOLUNTEERING:

All student in the 6th Form are required to undertake a volunteering role, either within school, or through external extra-curricular activities. This helps them to contribute to 6th Form life and the wider school community. In doing so, students are able to add value to UCAS Personal Statements, and apprenticeship and job applications.

Volunteering opportunities are numerous, but include:

- Sports leadership roles (see above)
- House Leader role
- Literacy and Numeracy mentoring for KS3 students
- Classroom support in (KS3 / KS4)
- Mentoring KS3 students
- Running social clubs

Students taking part in Gold Duke of Edinburgh, will fulfil their volunteering through this programme.

Application Information:

Deadline Friday 16th December

Applications received by this deadline will mean that subject preferences are taken into account when finalising option blocks. We are able to accept later applications at any point prior to our start date in September 2023.

Application Pack:

Access to our application pack, including our on-line Application Form and 6th Form Prospectus, is via the QR code.

If you would like a printed Application Pack, a copy can be requested via your child's tutor, or please email: sxj@abbeyfield.wilts.sch.uk





6TH Form prospectus

Abbeyfield School



Our team are always happy to help

If you have any questions, or would like to visit the school, please contact:

sxj@abbeyfield.wilts.sch.uk

Or visit our website, 6th Form pages for more details:

www.abbeyfieldschool.co.uk

01249 464500 or 01249 464539



@Abb6th



6th Form Abbeyfield School

Abbeyfield
School

