

The background of the entire page is a blue-tinted photograph of several young men in school uniforms (suits and ties) standing in a courtyard. The image is semi-transparent, allowing the text and logos to be overlaid.

6TH Form 3 prospectus

Abbeyfield
School



**Inspiring
Excellence**

Welcome
Page 2

Senior students
Page 4

Abbeyfield pathways
Page 7

Sixth Form courses
Page 11

Sixth Form

Sports Leadership Page 41

Sixth Form Enrichment
Page 42

I can...

Peter Sloan:

I have enjoyed every moment of studying at Abbeyfield Sixth Form. Abbeyfield offers a plentiful amount of leadership opportunities, as well as encouraging us (to volunteer) within the school. The lessons are very interactive, enjoyable and beneficial. I have thoroughly enjoyed my time here.



**Application
Information**



Welcome from the Head of Sixth Form:

We are delighted that you are considering Abbeyfield 6th Form for your post-16 provision. At Abbeyfield we are extremely proud of our 6th Form offer. Our 6th Form ambition to Inspire Excellence was reflected in our "recent Ofsted inspect", which found that "In the 6th Form, there are ambitious programmes of study tailored to students' individual needs and aspirations" (2022). Our Summer 2022 and 2023 outcomes were very strong, and our students have been able to progress to their chosen post-18 destinations. This, we deem to be our utmost priority.

Our outcomes reflect a commitment to high quality teaching which means that students are able to make better than expected progress across their subjects. Our smaller than average class sizes allow for seminar style teaching, where students are able to spend more time with teachers to discuss work and understand what they need to do to make progress. Students are also supported through supervised study sessions to complete the independent working required to be successful in their Level 3 courses.

Our excellent pastoral and careers guidance support students to be prepared for life after Abbeyfield, and we are able to provide an extensive range of leadership and enrichment opportunities to add value to post-18 applications. As a result, our 6th Form students are able to access a wide range of post-18 pathways, including Oxbridge, other Russell Group universities, Degree Apprenticeships, Higher Apprenticeships, paid employment, or simply taking a gap year to travel before moving onto university or into a career.

We are very proud of our provision, and hope that our prospectus will provide you with the information you require to help you to make an informed decision about our 6th Form.

If you have any questions, or would like to arrange a tour of our 6th Form accommodation, please contact me by email: sxj@abbeyfield.wilts.sch.uk



Miss Jones
Head of 6th Form



"The sense of community, everybody knows everybody and everyone helps each other and I am always happy when I am there"

Head Students

As part of their 6th Form programme, Abbeyfield students are offered numerous leadership opportunities and enrichment roles which can not only add value to Post-18 applications but also provide us with experiences allowing us to enhance crucial life skills such as leadership and communication. Abbeyfield is a school where you are allowed to feel comfortable enough to express yourself and where teachers adapt lessons to encourage wide participation, making lessons enjoyable as well as challenging you to your full potential. This promotes a community feel within the school in which Abbeyfield's staff are familiar with each student. This community feel is emphasised primarily through the four Houses, Talbot, Alfred, Neeld and Brunel. We are very proud to be part of the school community for these reasons and feel very privileged to have been appointed as the Head Students.

With there being three Head Students, we represent the three sections which are crucial to Abbeyfield life: The House System, led by Lilly Howell, The Student Council, led by Ben van Alstede and The Pastoral System, led by Beth Cooper. Additionally, our role as Head Students entails us in gaining experience from dealing with external bodies such as charities. Through working with the 6th Form Student Leadership Team, we manage to make considerable contributions to local communities, such as The Grand Appeal, Doorway Project and The Samaritans, by running fun events such as bake sales and competitions, which take place throughout the school year.

This responsibility of representing the House System, Student Council and Pastoral System, allows us to excel as students, leaders and as individuals as the skills and experience that we obtain from being Head Students are transferrable to our next steps in life, beyond Abbeyfield School. Not only that, we hope to ensure that Abbeyfield School continues to make a difference to its students and the wider community.

Lilly Howell, Ben van Alstede, Beth Cooper



Student Council

At Abbeyfield School, we have a Student Council which is open to all year groups meaning, we can get a variety of views from younger students to an older student's perspective, benefiting every student at Abbeyfield. Each tutor group in the school enrolls a Tutor Representative, to represent their peers in a friendly and professional meeting. In these meetings the Head Students and the Tutor Representatives discuss opinions and suggestions that the tutor group wants to bring forward. The Head Students then pass the feedback from the Tutor Representatives onto the Head Teacher, Mr Norgrove, during fortnightly meetings where we discuss the potential of the ideas. We then feedback this to the Tutor Representatives in our next meeting. The Tutor Representatives also get the chance to feedback ideas proposed by Mr Norgrove, such as a change to the uniform for instance. Being a Tutor Representative for the Student Council, is no doubt one of the best things that you can do as a Student.

The Student Council allows for the Student Body to provide a voice into what makes their school, their school. It is a unique responsibility to be one of the three Head Students at Abbeyfield School and to have the responsibility for the Student Council and the Student Body. This has allowed me to excel in my leadership skills and confidence which stands out during school events, open days and parent tours, which I hope will be transferrable to my next steps after my time here at Abbeyfield School. I think the most important and best elements of being one of the Head Students, is the interactions from the Student Body, through to the Teachers. Whenever I am out in the Main Street during Social Times, I will always encounter a wave or a question from one of the Students or a "Hello!" from the Teachers. That is quite possibly the best thing about being a Head Student! **Ben van Alstede**





The House System

Is a massive part of school life at Abbeyfield. It gives students the chance to participate in activities together outside of lessons. From competitions like spelling bees to bake sales; It gives them many opportunities to work hard towards achievements for not only themselves but their house as a whole too. This gives the students the chance to feel like they're part of a community. A role in the senior leadership team gives you so many chances to work on key skills vital for the future, skills in which can often be applied in post 6th form life.

The roles of House Leader (Year 12) and Senior House Leader (Year 13) allow you to take a lead in helping those within the school and the local community as well. Charity is a very important aspect of our houses, raising over £600 for the Grand Appeal last year. A charity that many within school have personal experience with. The House Leaders get several chances to help with sports competitions, bake sales, quizzes and even sponge the teacher days. As a senior leader you will have an active role in deciding what activities you want to run and how they'll work. Although this role contributes a substantial amount to the school itself, it's also hugely beneficial when it comes to planning for a future filled with responsibility where practise really does make perfect.

Having a Head Student role that specialises in aiding the House Leaders is a huge opportunity too. It is an excellent chance to become really involved in the school community and gain skills that will be truly valuable in life post 6th form. **Lilly Howell**

The Pastoral

Here at Abbeyfield plays a fundamental part in our school lives. When leaving Abbeyfield, students don't just leave with academic qualifications, but they also take with them valuable skills and life lessons that can be used Post-18 within the wider community. Abbeyfield offers a range of support groups and programmes such as the peer mentoring programme, the HIVE and the LGBTQIA+ Hub that students can get involved in and where they can meet new people from different year groups. The pastoral team helps to deliver these, alongside PSHE lessons, where they promote the importance of wellbeing and mental health to the student body. These different groups contribute to that great sense of community that we have within our school, alongside the Student Council and the House System. I believe that these different groups that our school has to offer are one of the leading factors as to what makes Abbeyfield a great school.

Being a Head Student who specialises in the pastoral department is a great privilege and opportunity. As part of the role, you get to work closely with both the pastoral team and student body allowing you to develop your leadership, communication and organisation skills further, which are valuable assets to have when looking at options Post-18. **Beth Cooper**





academic studies

Research shows that the most important factor in academic success is time spent with qualified and enthusiastic teachers. At Abbeyfield we teach in smaller than average groups and encourage staff to adopt a seminar approach ensuring each student can benefit from individual time with subject specialists as well as structured teaching time, and supervised study sessions to support independent working. This has enabled students to make progress and achieve positive outcomes.

Celebrating Success: Summer 23

Despite not having been able to sit GCSE exams, and in the context of a raising of standards and adjustment to grade boundaries to reduce the number of top grades awarded, we are delighted that our students were still able to evidence outstanding progress and attainment in their exams and have achieved exceptional results.

Notable successes include:

- Ben Driver-Lomas:** A*, A, A, B (Gap Year)
- Katie Heaton:** A*, A, A, and A at AS (Surrey - Veterinary Medicine)
- Karen Sadler:** A, A, A, B (Anglia Ruskin - Medicine)
- Ollie Seaber:** A*, A, A (Southampton - Marketing)
- Ella Jefferies:** A*, A, Distinction, and A at AS (Hertfordshire - Astrophysics)
- Libby Robbins:** A, A, A (Sparsholt - Veterinary Nursing)
- Grace Ferris:** A, A, B (Reading - Psychology)
- Cara Vale:** A, A, B (Warwick - Law)
- Nell Tidmarsh:** Distinction*, A, B - (degree apprenticeship in healthcare TBC)

All of our students, without exception, should be incredibly proud of their outcomes which represent that Abbeyfield 6th Form provides both the academic rigour required to achieve A* and A grade outcomes, but also exceptional value added to support students to access grades that are above those indicated by prior attainment.

Strong outcomes have allowed our students to access their chosen Post-18 pathways, and we wish them every success in the future.

Miss Jones, Head of 6th Form

Abbeyfield Pathways

All applicants will be provided with guidance to support them to choose the most appropriate of our three academic pathways:

- 1 For students with mostly Grade 4 profile. Subjects available to these students are shown in red.
- 2 Recommended for students with mostly Grade 4 / Grade 5 profile. Subjects available to these students are shown in red and blue, but please also check subject specific course requirements. Recommended to include at least 2 x A-Level subjects, and either Core Maths or Skills for Work and Life
- 3 Recommended for students with mostly Grade 6+ grade profile. Subjects available to these students are shown in blue and black (red only on discussion), but please also check subject specific course requirements. Recommended to study 3 x A-Level subjects, and either Core Maths, EPQ or Skills for Work and Life, but please also check subject specific course requirements. 4 x A-Levels, or 3 + 1 x AS Level (including Further Maths in conjunction with A-Level Maths only) are also available for Pathway students on discussion.

OPTION BLOCKS: SEPT 2024

BLOCK A	BLOCK B	BLOCK C	BLOCK D
Business A-Level	Chemistry A-Level	Biology A-Level	English Language
English Literature A-Level	Business BTEC	Comp Sci A-Level	A-Level
	Economics A-Level	Geography A-Level	History A-Level
Criminology Applied A-Level	Philosophy & Ethics A-Level	ICT BTEC	Maths A-Level
	A-Level	Psychology A-Level	Photography or Art A-Level
Physics A-Level	Drama & Music CTEC		
Languages (French/Spanish) A-Level	Sport Cambridge National		Sociology A-Level

We recommend that students following Pathway 2 also study either Core Maths or Skills for Life and Work.

We recommend that students following Pathway 3 also study either Core Maths, EPQ or Skills for Life and Work.

INSPIRING



EXCELLENCE



"Students achieve well in the Sixth Form and benefit from strong teaching and effective support, including supervised study sessions."

Ofsted

course listings



“The teachers, personal attention you need. I know if I need something done you’ll get it done quickly!

It’s small so we have good relationships with the teachers”

5 X GCSE Grade 4 or above / BTEC Pass – to include English Language Grade 4.

AS-Level only

Core Maths	14	AS Further Maths	16
EPQ	15	Skills for Work and Life	17

Business

BTEC Business	18	Computer Science	21
BTEC IT	19	Criminology	22
A-Level Business	20	Economics	23

Creative Arts

Performing Arts CTEC Extended Certificate	24	Fine Art &	25
		Photography	

English

English Language	26	English Literature	27
------------------------	----	--------------------------	----

Humanities

Geography	28	Philosophy	30
History	29	Sociology	31
Psychology	29		

Maths

Maths	32
-------------	----

Modern Foreign Language

French	33	Spanish	34
--------------	----	---------------	----

Science

Biology	35	Physics	37
Chemistry	36		

Sport

Level 3 Cambridge	38
Technical in Sport	



SCAN ME

Subject entry requirements are detailed on our website – see QR code for link’

AS-Level



Core Maths

Specification Details: AQA

Why Core Maths? Core Maths is about students doing applied mathematical problems to increase their confidence in using maths and to be better equipped for the mathematical demands of other courses, higher education, employment and life. Core Maths has been designed in collaboration with universities and employers to teach you the mathematical skills you need to be successful in a wide range of courses including the sciences and humanities alongside more traditionally mathematical courses such as Economics.

Furthermore it will develop your real-life maths skills. What you study is not purely theoretical or abstract; it can be applied on a day-to-day basis in work, study or life and the course will include a financial maths element where you look at calculations for tax, APR and loan repayments.

ENTRY REQUIREMENT:

Minimum Sixth Form entry requirement, plus:
Maths Grade 5

Extended Project Qualification (EPQ)

Specification Details: Edexcel

Why an Extended Project Qualification? Undertaking an “EPQ” gives you the opportunity to study something of your own choice and design. The project can be essay based/ field study/ performance or artefact.

The EPQ is based on university-style independent but supervised learning and is equivalent to an AS Level. Students can gain up to 28 UCAS points to contribute towards university entry requirements, or simply add value to apprenticeship or work applications.

Projects designed by previous and current students are diverse and challenging: “Is our current approach to protecting against human African trypanosomiasis appropriate?”, “Does the overuse of technology really affect people’s eyesight?”, “Is murder ever morally justifiable?”

ENTRY REQUIREMENT:

Minimum Sixth Form entry requirement, plus:
English Grade 6



AS Further Maths

Specification Details: AQA - 2 Year Course

Why Further Maths? AS Further Mathematics is designed to broaden and deepen the mathematical knowledge and skills developed when studying A-Level Mathematics. The course is studied alongside A-Level Mathematics and provides a stimulating experience for those who enjoy the subject. Students taking Further Mathematics overwhelmingly find it to be an enjoyable, rewarding, and empowering experience. For someone who enjoys mathematics, it provides a challenge and a chance to explore new and/or more sophisticated mathematical concepts such as imaginary numbers and polar coordinates. AS Further Maths is a desirable extra qualification for many Russel Group Economics, Maths and Engineering degree courses.

ENTRY REQUIREMENT:

Minimum Sixth Form entry requirement, plus:
Maths Grade 7
(In conjunction with Maths A-Level only)

Skills for work and life Qualification (Level 3)

Specification Details: WJEC

We will be offering a new and exciting course this year for our Year 12 students. The essential skills for work and life course is an employability course designed to prepare students for work and industry. Within this course, students will learn about formal presentations, communication within teams, critical reading and researching and writing / formatting complex documents. These skills are essential in the workplace and ones in which employers we work closely with have all asked to be part of the curriculum. This qualification will last 1 year and as above will provide students with a wide range of skills linked to further employment.

ENTRY REQUIREMENT:

Minimum 6th Form entry requirement'



Business



BTEC Business

Specification Details: BTEC

Why BTEC Business? BTEC Business is a course that will teach you a wide range of skills. Not only will you become adept at analysing a business, but you will have multiple opportunities to extend your learning through experiencing real world business visits and mentors.

The wide range of skills range from marketing and customer service through to interviewing technique and gaining promotions. In a world where competition has never been tougher, we endeavour to allow our students to gain real world skills that will help them develop into managerial prospects. This could really be the start of something very special.

ENTRY REQUIREMENT:

No additional entry requirement
No requirement to have studied Business previously

BTEC IT

Specification Details: BTEC

Why IT? The BTEC Level 3 National extended certificate in IT is the perfect course for anyone looking to develop a common core of IT knowledge and study areas such as the relationships between hardware and software that form an IT system.

Other areas you will learn about are managing and processing data to support businesses and using IT to communicate and share information. You will have the opportunity to create your own social media campaign for a local business as well as develop an information management system.

Everything in the BTEC IT course is related to real world scenarios with opportunities to work in the community to build up "expert" knowledge desired by employers.

ENTRY REQUIREMENT:

No additional entry requirement.
No requirement to have studied this previously



Business Studies A-Level

Specification Details: AQA

Why Business Studies A-Level? A-Level Business Studies is a powerful tool to help launch you onto becoming a business person. The next CEO? The next Branson? Or want to work in a large company in marketing and design? Whichever it may be Business Studies will help you to develop the skills and knowledge to help you ultimately progress into the world of business.

The course provides students with challenging financial concepts and more creative concepts such as marketing. It pushes students to form evaluative judgements based on real world situations.

ENTRY REQUIREMENT:

Grade 5 if studied at GCSE,
BUT no requirement to have studied this previously
Maths Grade 5
English Grade 5

Computer Science

Specification Details: AQA

Why Computer Science? A-Level Computer Science is a rigorous, challenging and ultimately rewarding course that gives you a fascinating insight into the world of the computer scientist.

Dijkstra, a Dutch computer scientist, said that computer science is not just about the computers, and in A-Level Computer Science you will widen as well as deepen your knowledge. From logic gates to processors, networks to the Internet, databases to big data, algorithms to ethics; you will cover it all. As well as new ways of programming and a real-world programming project of your choice.

In an increasingly automated world, where computer scientists are in demand, AQA computer science gives you an excellent grounding for further study and progression.

ENTRY REQUIREMENT:

Grade 5 if studied at GCSE,
BUT no requirement to have studied this previously
Maths or Statistics Grade 5



Criminology Diploma

Specification: WJEC

Qualification type: Level 3 Diploma (equivalent to 1 A-Level)

Why Criminology? This level 3 Diploma is offered to students who have a keen interest in crime. Criminology is all about an understanding of people and the society that we live in. You need to be non-judgemental, be very interested in people, society and crime. Students may find some of the content disturbing given the nature of crime, although all topics are handled sensitively.

The skills learned by studying criminology are transferable; these are highly valued in many occupations, and for entry to many further courses, even if you do not pursue a career in criminology. Careers directly linked to the study of criminology include working in the National Probation Services, the Courts and Tribunals Services or the National Offender Management Services.

ENTRY REQUIREMENTS:

No additional entry requirement.



Economics

Specification Details: AQA

Why Economics? Economics is a study of behaviour. Students studying Economics ask the important questions about why markets exist and what incentivises firms to produce as well as why individuals choose to consume the goods and services they do.

Students tackle the basic economic problem linked to scarcity and investigate why markets nearly always fail to allocate the right amount of goods and services to satisfy demand. Students also question the role of the government in influencing and regulating markets and consider the complexity of decision making and where governments have got it wrong.

ENTRY REQUIREMENT:

Minimum Sixth Form entry requirement, plus:
Maths or Statistics Grade 5
English Grade 5

Creative Arts



Performing Arts CTEC Extended Certificate

Specification Details: OCR

The Level 3 Cambridge Technical in Performing Arts qualification will help you to achieve your potential and progress to the next stage of your lives, whether that's university, a degree or higher apprenticeship or employment.

We have designed refreshing and exciting content that's up to date, engaging, fit for purpose and suitable for your performing arts needs, and feedback. It is examined as a mixture of performance, coursework and exams in both Year 12 and Year 13.

The qualification includes specific pathways for all performing arts specialisms: music, acting, dance, musical theatre, and theatre production. Each of these pathways has units specifically designed for the specialism and optional units that allow you to specialise even further.

We run the disciplines concurrently, which enables excellent combined arts performances. Please speak to your Creative Arts teacher for more information.

ENTRY REQUIREMENT:

Grade 4 Drama or Music if studied at GCSE, but crucially you must be able to evidence an aptitude for performing arts, or theatre production.

Fine Art & Photography A-Level

Specification Details: AQA

Course details: We offer two courses at A-Level: 'Fine Art' and 'Photography with Graphic Communication'. We deliver the AQA specification and both courses follow an identical structure: 60% coursework and 40% practical exam. Throughout the course students will explore, develop and create practical responses for their own 'personal investigation' and they will support their studies through contextual research and a written essay. Students will also complete a practical project in response to an exam board theme for their practical exam.

Why Art & Design? The creative industries are worth almost £10 million an hour to the UK economy and it is a fast growing sector. Visual arts contribute significantly to this growth and career prospects for young artists are exciting.

Abbeyfield Art Department houses excellent facilities including general art rooms, pottery wheels and kilns, a computer suite and photography studio and darkroom. Teachers within the department can offer a range of expert skills including: drawing and painting, ceramics, photography and graphics. Our expertise enables us to offer a broad curriculum and our school is widely recognised for the outstanding technical skills that our students develop.

The Art Department offers a range of enrichment activities including gallery visits, workshops and we are currently establishing links with local universities. This is an exciting time to be part of a vibrant and creative community!

What are the progression routes - university/careers? A-Level Fine Art or Photography with Graphic Communication is the perfect stepping stone to a Foundation Art course or degree at university. Students from Abbeyfield regularly progress to exciting degrees including fine art, animation, photography, graphic design and architecture. Possible careers include: advertising, publishing, teaching, interior design, graphic design, illustration, fashion design and photo-journalism.

ENTRY REQUIREMENT:

Grade 4 if studied at GCSE,
BUT no requirement to have studied this previously
- must be able to demonstrate a flair for the subject.



English



English Language

Specification Details: AQA

Why English Language? English Language is the study of linguistics – how English works as a language. It takes a fascinating look at how communication works, how the brain handles language, the process of learning the language and the evolution of the English language over time.

The course is focused on the analysis of a wide variety of texts that go way beyond those studied at GCSE and will provide you with an enlightening insight into how we communicate with each other in everyday life both in writing and verbally.

ENTRY REQUIREMENT:

Grade 4 English Lang but on discussion only

English Literature

Specification Details: AQA

Why English Literature? English Literature is a wide ranging, diverse course studying texts from all the three major genres, across a wide time frame. Though Classic literature such as Shakespeare has its place in the course, so does modern literature, including popular poets like Carol Ann Duffy and novelists such as Ian McEwan and Margaret Atwood.

The historicist style of study allows students to scrutinise a shared theme across a whole range of texts, understanding how presentations of this theme can alter according to the attitudes, politics or events of the time it was written, and then compare these attitudes to more modern ones.

The non-exam component is a brilliant opportunity for students to focus on literature that interests them personally, and make comparisons between their favourite texts, researching contexts in more detail.

ENTRY REQUIREMENT:

English Literature Grade 5
English Language Grade 5





Humanities

Geography

Specification Details: OCR

Why Geography? Geography is about the world you live in; it is about where you live, how you live, our futures and our pasts. It is a dynamic, fast paced and exciting subject which encourages flexible thinking, problem solving, critical thinking and independence of thought. A-Level Geography is a highly successful subject at Abbeyfield School, and students will be extremely well supported in their studies.

Course content includes many links to GCSE units, whilst also introducing students to issues with human rights and the complexity of international trade. The course includes completion of an Independent Investigation (20% of total mark).

A-Level Geography is highly valued by universities and employers. As a facilitating subject it will keep open a wide range of options at university, or Higher / Degree apprenticeships.

ENTRY REQUIREMENT:
GCSE Geography Grade 5.
Maths or Statistics Grade 5
English Grade 5

History

Specification Details: Edexcel

Why History? Never has there been a more important time to study A-Level History. The past is alive, controversial and hugely significant. From the discovery of Richard III's body under a carpark in Leicester, to the events that have shaped modern Russia and China, our courses show that History is more than a study of the past. They are thought provoking, relevant and allow us to critically engage with the present and the future. History is constantly being written and rewritten, contested and reinterpreted and we interrogate and debate these issues.

Most importantly however History is about people: individuals, families and society. For we are the custodians of human experience and far from being rooted in the past, History is the passport to the future.

ENTRY REQUIREMENT:
Grade 5 if studied at GCSE, BUT no requirement
to have studied this previously.
English Grade 5

Psychology

Specification Details: EDUCAS (WJEC)

Why Psychology? Have you ever wondered why people behave and act the way they do? Are we more a product of our environment or our genes? How can we tackle issues such as mental health? We consider these questions and many more in Psychology.

You will have the opportunity to explore a range of psychological approaches from the Freudian era to modern day psychologists. In the second year of the course, you will explore a number of real-life implications including addiction, schizophrenia and criminal behaviour.

There will be lots of opportunities for debate throughout the course, including ethical issues, cultural bias and the reliability of memory. Alongside these topics, you will also learn how a psychologist carries out research and will conduct your own investigations.

ENTRY REQUIREMENT:
English Grade 5
Maths or Statistics Grade 5 and Science 4/4 minimum
Or Maths or Statistic Grade 4 and Science 5/5 minimum

Philosophy

Specification Details: OCR

Why Religion, Philosophy & Ethics? Do you enjoy asking why? Debating BIG QUESTIONS such as why we are here and what is the right thing to do? Engaging in high level discussion and discourse? Then Religion, Philosophy & Ethics is the course for you!

The course covers a wide range of philosophical, religious and ethical ideas including the ancient Greek philosophy of Plato and Aristotle, consideration of key ideas in Christianity and whether they are relevant today and how we make moral decisions about complicated issues such as euthanasia or sex.

ENTRY REQUIREMENT:
Grade 5 if studied at GCSE,
BUT no requirement to have studied this previously.
English Grade 5

Sociology

Specification Details: OCR

Why Sociology? Do you enjoy exploring the world around you? Would you like to gain a deeper understanding of the structure of society? Would you like to explore the social issues that are relevant to your own experiences and those of the people around you?

Sociology seeks to explore the factors that affect and influence our everyday decisions and experiences. It looks to explore and analyse a variety of theories which attempt to explain how our society and community functions today.

It is the study of human behaviours and the interaction between human groups and institutions.

ENTRY REQUIREMENT:
Grade 5 English Language



Maths



Maths

Specification Details: AQA

Why Maths? A-Level Maths is a rigorous subject, suited to highly motivated mathematicians. Studying Maths helps us find patterns and structure in our lives. Practically, Maths helps us put a price on things, create graphics, build websites, build skyscrapers and generally understand how things work or predict how they might change over time and under different conditions.

Maths is one of the best subjects to develop your analytical, research and problem solving skills. Not only will studying maths help give you the knowledge to tackle scientific, mechanical, coding and abstract problems, it will also help you develop logic to tackle everyday issues like planning projects, managing budgets and even debating effectively.

ENTRY REQUIREMENT:
Maths Grade 6

Modern Foreign Languages



French

Specification Details: AQA

Why French? Studying AS/A2 French at Abbeyfield provides a comprehensive experience that no other subject outside languages can match. The content is fantastic, with students studying a wide range of rich topics such as technological and social change, diversity and the benefits it brings, political engagement, and French-speaking artistic culture, including francophone music and cinema.

French at Abbeyfield will develop your current affairs university-level research. Our teachers have extensive experience of French culture and push students to stay abreast of current affairs by embracing the very latest technology.

ENTRY REQUIREMENT:
French Grade 5

Spanish

Specification Details: AQA

Why Spanish? Studying Spanish at AS/A2 is something that will really stand you in good stead for the changing world that we live in. You'll gain a deep insight not only into the language and grammar of this wonderful European country, but the culture as well. You will look at many contemporary themes, such as politics, family and youth culture. You will develop into an all-round communicator.

Universities seek out students who are primed and ready to make that next step to Higher Education. By studying Spanish with us at Abbeyfield, we'll show you how to make that step, helping you take your language learning experiences even further.

ENTRY REQUIREMENTS:
Spanish: Grade 5



Science

Biology

Specification Details: AQA

Why Biology? Biology is the study of life, and what a wide range of topics this encompasses! This subject is so vast in its breadth that there are lots of areas of interest for students and lovers of lifelong learning.

At one end of a spectrum, Biology can enthral you at the microscopic level as we look at the complexities of the cellular level and the structure of the molecules that make all organisms.

At the other end of the spectrum we study the interactions between organisms, whether big or small, will fascinate you. Currently, biology faces a bright future, as biologists strive to develop ways to help improve the health of the world; whether it is finding a cure for cancer or ways to manipulate genes and stem cells.

ENTRY REQUIREMENT:
Biology Grade 6 (or Combined Science grade 6-6)
Maths Grade 5

Chemistry

Specification Details: AQA

Why Chemistry? A-Level Chemistry is a rigorous, challenging and ultimately rewarding course that develops students' scientific skills and knowledge.

Chemistry is the branch of science concerned with the substances of which matter is composed, the investigation of their properties and reactions, and the use of such reactions to form new substances. Understanding chemistry helps you to understand the world around you. Cooking is chemistry. Everything you can touch, or taste or smell is a chemical.

Students considering a career in medicine or veterinary practise MUST study A-Level Chemistry.

ENTRY REQUIREMENT:

Chemistry Grade 6 (or Combined Science grade 6-6)
Maths Grade 6

Physics

Specification Details: AQA

Why Physics? Physics has enormous breadth and depth which extends into every area of our lives. It is the universal science, an essential tool for many areas of science and engineering. Physics provides a model/explanation of the world around us ranging from the expansion of the Universe and the evolution of stars to sub-atomic particles such as Quarks.

The AQA course has been structured to include exciting topics of modern physics from the outset but underpinned by the key practical skills needed to become an experimental scientist or an engineer. These topics include Quantum Phenomena and Particle Physics. The course also studies in more detail topics which are more familiar, such as Energy, Force and Motion, Waves and Electricity.

ENTRY REQUIREMENT:

Physics Grade 6 (or Combined Science grade 6-6)
Maths Grade 6



Sport



Level 3 Cambridge Technical in Sport

Specification Details: OCR

Why BTEC Sport? Level 3 Sport has successfully been delivered for over 12 years in Abbeyfield Sixth Form and has consistently achieved excellent results.

As well as achieving successful results students will be able to experience a variety of Sporting topics and submit work in different formats such as written exam, assignments and pre-release tasks.

Students opting for this subject will develop a wide range of transferable skills that are sought after by both universities, colleges and employers particularly in the sport and leisure field.

ENTRY REQUIREMENT:

No additional entry requirement.
No requirement to have studied this previously

ADVICE from our Year 13's...

Enjoy it while you can because it'll be over before you know it

Make sure to start revising as you learn things, the revision material will really help when preparing for exams

Make the best use of your time, don't just mess around in your frees

Totally sweat out year 12, get as far ahead as you can and it'll make your year 13 a lot easier

It's important to keep revising all the way through 6th Form, actually do it

Don't leave work/revision till last minute as it catches up with you

Revise as you go and take every exam or test seriously. You never know who might need to use them!!

The two years seems like a long time but it will go really quickly!! Enjoy your time, and don't get behind on your work, it's definitely easy to do so

Don't turn down opportunities

Review content for each lesson at the end of each day for half an hour or so

Exploring all options for university; I was sure I knew what I wanted to do until I decided I didn't want to do that course anymore

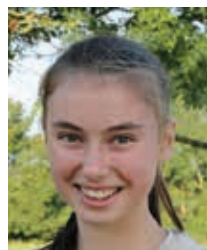


Why Abbeyfield 6th Form?



Ben Clayton

"What Abbeyfield Sixth Form does best is the individual support it gives to each student. I felt that the transfer from Year 11 was very well supported, from subject choices when making decision, to the being given good advise to support me to manage the increased workload What Abbeyfield Sixth Form does best is the individual support it gives to each student".



Karen Sadler

"I have enjoyed studying at Abbeyfield Sixth Form as it is great to study subjects I am interested in, in more detail. There have been a wider range of trips and events available and all the teachers have been very supportive, particularly as a student who was new to Abbeyfield".



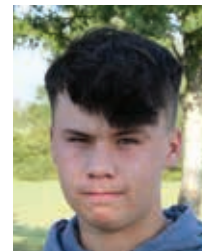
Jess Tanner

"Since starting Sixth Form I have felt very comfortable beginning this new journey as teachers as I know the teachers, and all my friends. Everyone has been so supportive of me, and I wouldn't want to be anywhere else"



Lottie Belcher

"Sixth Form is a challenging and very rewarding experience which has allowed me to grow in confidence. My subject teachers have been incredibly supportive and have made me feel very prepared for upcoming exams".



Peter Sloan

"I have enjoyed every moment of studying at Abbeyfield Sixth Form. Abbeyfield offers a plentiful amount of leadership opportunities, as well as encouraging use to volunteer within the school. The lessons are very interactive, enjoyable and beneficial. I have thoroughly enjoyed my time here".



Ella Jefferies

"It is great to take subjects further and build upon existing knowledges whilst also learning brand new things. Study periods are also very beneficial to quietly work on revision and homework, and also to work together to understand problems. Teachers are also supportive and encourage you to get help whenever needed".





Chloe Kew

"Sixth Form was a big step-up for me, and it has been difficult but also enjoyable. Being a member of the 6th Form is a good experience as you feel more independent with the school compared to Year 11. The teachers are very helpful and make the step-up to A-Levels really manageable for all."

Life student

Sports Leadership

Our Sixth Form community allows students to take on roles and responsibilities across the school, help to run the Sixth Form and gain confidence in who they are as a person.

SPORTS  **LEAD SCHOOLS**  **YOUNG COACHES AND ACTIVATORS**

Sports leadership opportunities are supported by The Youth Sports Trust, and include:

- Sports Enrichment
- Sports Ambassador
- Sports Council

These roles offer exciting opportunities and the chance to be part of the Youth Sport Trust Leadership Programme, the only school in Wiltshire to offer this. You will be given the opportunity to organise and run different sporting festivals for our feeder primary schools. You will also work alongside the Chippenham Sports Partnership and be part of the Chippenham Sporting Community. As part of the Youth Sport Trust Leadership programme, you will complete a series of learning modules that focus on developing the skills which help you learn vital skills for life after school. We look at teamwork, communication, problem solving, self-belief and self-management and skills framework. All modules are fun and engaging, with activities that test the Sports Ambassadors knowledge and help them build their confidence to organise and run sports event. You will receive the Youth Sport Trust award at the end of your time at Abbeyfield. You will work with out of school Active Partners and the Abbeyfield PE Community, and Sixth Form leadership team.

The Sports Ambassadors are seen as the face of our Sports Community and will attend Sixth Form meetings. This role will give you the chance to plan and run events yourself, this is great for the local community and building your skill set. To help support this every person on the programme will undergo safeguarding and first aid training, you receive qualifications that will help you with life after school.

The great thing about the leadership role is you don't have to be SPORTY to be a Sports Ambassador. Instead, you need to demonstrate an ability to lead others, alongside the desire and commitment to make a difference.



Enrichment continued

DUKE OF EDINBURGH GOLD AWARD:

The Duke of Edinburgh's award is about helping you along the path to a productive and prosperous future.

Achieving your Gold Award will give you skills, confidence and an edge over others when you apply for college, university or a job. Beyond your academic achievements, universities want to see evidence of 'soft skills' that you have developed through extra-curricular activities, such as communication, commitment, leadership and teamwork. The Gold DofE Award is a fantastic way to demonstrate and evidence these skills in practice.

At Abbeyfield School we run the direct entry Gold award. This takes a minimum of 18 months to complete and requires participants to complete volunteering, physical and skill related activities.

The Gold award also requires participants to complete a residential activity. In completing the award you'll also make a difference to other people's lives and your community, be fitter and healthier, make new friends and have memories to last you a lifetime.



PASTORAL:

You will be part of a vertical tutor group, comprising Year 12 and Year 13, which is led by an experienced Sixth Form tutor. By having vertical tutor groups, we are able to develop an integrated Sixth Form community in which students can share mutual experiences and tutors can provide support across the Year groups. We also provide a clear tutor programme to ensure that effective use is made of this time.

6th FORM TUTOR PROGRAMME: 2023-24

MONDAY	TUESDAY*	WEDNESDAY	THURSDAY	FRIDAY
<ul style="list-style-type: none"> Reminder of key dates /deadlines/Messages Study Skills Week A Folder Checks + Supervised Study Week B 	<ul style="list-style-type: none"> Reminder of key dates /deadlines/Messages Ted Talk Tuesday 	<ul style="list-style-type: none"> Reminder of key dates /deadlines/Messages Post-18 	<ul style="list-style-type: none"> Reminder of key dates /deadlines/Messages Current affairs debate /discussion 	<ul style="list-style-type: none"> Reminder of key dates /deadlines/Messages Weekly Quiz/ Countdown Challenge Etc. Literacy & Numeracy mentoring.
<p>Tutor Sessions are Compulsory and must be attended so you can access the tutor programme and pastoral support.</p> <p>Supervised study 1:1 meeting with each tutee (to include folder checks) at least once a term</p>				



TRIPS:

As part of our 6th Form offer, you will also have the chance to take part in various trips, both within the school day, as well as residential. Students who qualify for bursary funding can access this for curriculum trips.

- Various careers fayres, apprenticeship workshops & university open days (Year 12+13)
- Subject curriculum trips i.e. Physics, English and Geography
- Duke of Edinburgh Gold

VOLUNTEERING:

All students in the 6th Form are required to undertake a volunteering role, either within school, or through external extra-curricular activities. This helps them to contribute to 6th Form life and the wider school community. In doing so, students are able to add value to UCAS Personal Statements, and apprenticeship and job applications.

Volunteering opportunities are numerous, but include:

- Sports leadership roles (see above)
- House Leader role
- Literacy and Numeracy mentoring for KS3 students
- Classroom support in (KS3 / KS4)
- Mentoring KS3 students
- Running social clubs

Students taking part in Gold Duke of Edinburgh, will fulfil their volunteering through this programme.

Application Information:

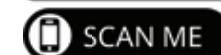
Deadline Friday 8th December

We are able to accept later applications at any point prior to our start date in September 2024.

Application Pack:

Access to our application pack, including our on-line Application Form and 6th Form Prospectus, is via the QR code.

If you would like a printed Application Pack, a copy can be requested via your child's tutor, or please email: sxj@abbeyfield.wilts.sch.uk





6TH Form prospectus

Abbeyfield School



Our team are always happy to help

If you have any questions, or would like to visit the school, please contact:

sxj@abbeyfield.wilts.sch.uk

Or visit our website, 6th Form pages for more details:

www.abbeyfieldschool.co.uk

01249 464500 or 01249 464539



@Abb6th



6th Form Abbeyfield School

Abbeyfield
School

